



# The Look Book

COMMERCIAL

---





# Contents

## COMMERCIAL

---

ExoTec™	9
ComTex™	15
Versilux™	17
HardiePanel™	19
Villaboard™	21





# *Looking good*

## INSIDE AND OUT

---

Whatever style you're after for the commercial space you're working on, you'll find plenty of options right here.

From striking panel patterns that withstand the toughest activities or weather, to modern rendered textures, we're here to arm you with the best tools of the trade.





## PREMIUM FIBRE CEMENT

*More than meets the eye*

## DESIGN VERSATILITY

From classic designs to more eye-catching modern looks, it's really up to you how you use the materials inside The Look Book. The range of finishes can be applied to so many commercial spaces. You're only limited by your imagination. Choose your look and go for it.



## DURABILITY

James Hardie® makes durable building materials that are easy to use in any commercial design. Whatever look you choose, you know you're getting the strength and durability your clients deserve that will last for many years to come.

## EASY SPECIFICATION

Composite construction makes the entire building process fast and simple compared to traditional construction methods. Our products come pre-primed so require less finishing time. The sheets and panels are easy to build and fit together requiring fewer nails, screws and other add-ons. Different James Hardie® materials also work together to streamline the entire building process.



## PEACE OF MIND

James Hardie™ fibre cement products are developed and manufactured to conform to Australian or International Standards. When installed and maintained correctly James Hardie™ external cladding products are deemed as suitable for use in non-combustible applications.



ARCHITECT: NBRS ARCHITECTURE



# ExoTec

## PANEL & SYSTEM

If high-impact resistance is paramount to your design, ExoTec™ panel & system is the façade panel that won't disappoint. It's pre-sealed for an easy finish and added durability, it also opens up design possibilities. Create vertical, horizontal or staggered panel patterns to suit the look you're going for.





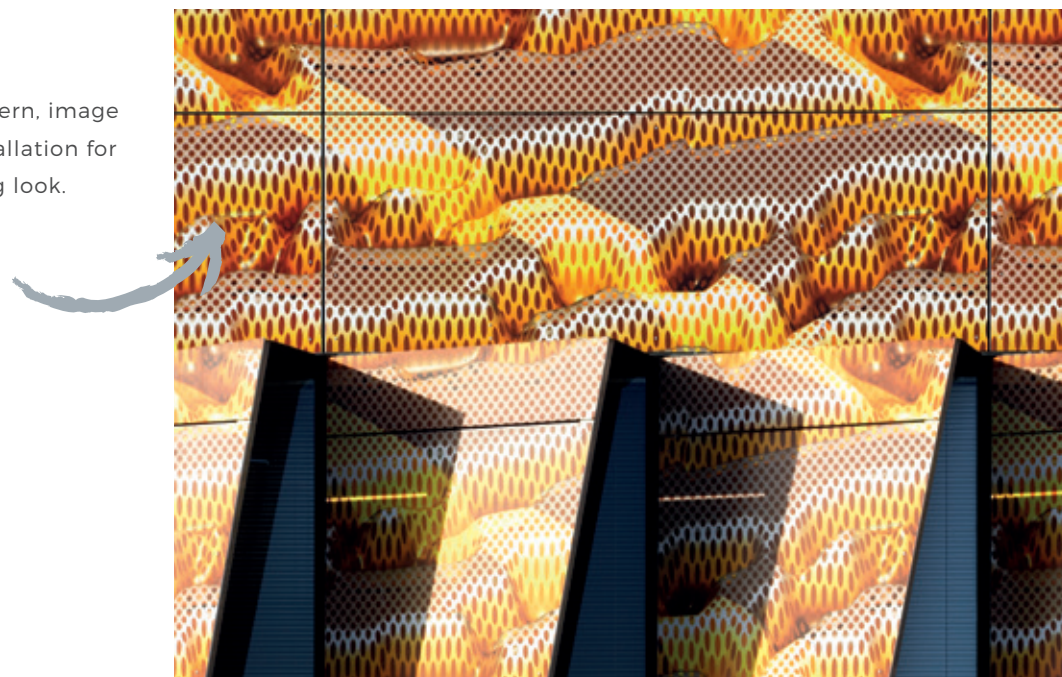
## PAINT

You can paint it any acrylic textured colour once the panels are installed.



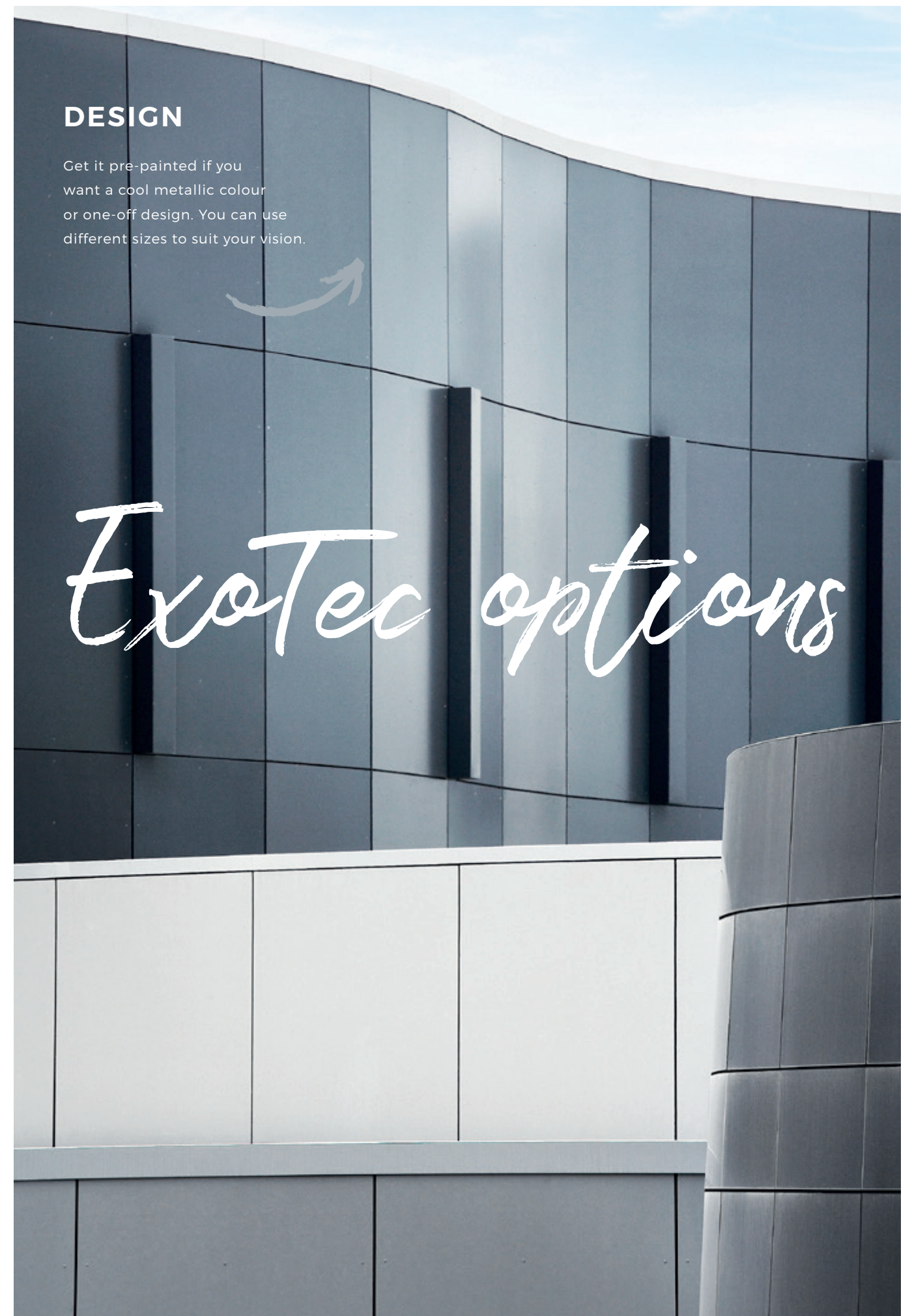
## PRINT

Custom print any pattern, image or design prior to installation for a unique, eye-catching look.



## DESIGN

Get it pre-painted if you want a cool metallic colour or one-off design. You can use different sizes to suit your vision.





*Express  
yourself*



### DESIGN TIP

Install the panels in any direction,  
even around curved walls,  
to achieve a cutting-edge look.





# ComTex

## PANEL & SYSTEM

---

Avoid the mess, time and heaviness of concrete and masonite.

ComTex™ panel & system gives you that rendered look without the fuss. It's pre-primed so you can even paint it with an acrylic textured paint once it's up.







# Versilux

## LINING

---

For that added touch of visual design, Versilux™ lining with its flat surface and distinct joins creates an impressive cubic pattern. It comes in ten different sizes, helping you create the lineal pattern you're after depending on the size of your wall or area you want to cover.







**BUILDING (THIS PAGE & OPPOSITE):**  
HEIRLOOM BY MATCH

# HardiePanel

## COMPRESSED SHEET

Whether you're working on a restaurant, a florist or even a large factory floor, be smart with the wet areas. Using HardiePanel™ compressed sheet substrate underneath the tiles will keep the floors strong, moisture-resistant and in peak condition for years.







# Villaboard

## LINING

Villaboard™ lining is the substrate that stands up to it all. It's resistant to moisture damage and exceptionally strong, so if you're building for a high-traffic area, Villaboard™ lining is the answer. It will keep your clients reassured for the future too.





THE LOOK BOOK BROUGHT TO YOU BY



*Get in touch*

LET'S BUILD YOUR DREAM COMMERCIAL SPACE

If you like what you've seen inside these pages,  
let's start creating. If you're not sure where to begin,  
we can help guide you into a space where you can  
start realising your dream project.

**We're here to help make it happen.**

  
[jameshardie.com.au](http://jameshardie.com.au)



# The Look Book

**COMMERCIAL**

---



For more information, warnings and warranties please see our website and review the relevant installation and technical guides. Copyright ©2017 James Hardie Australia Pty Ltd ABN 12 084 635 558.  
™ and ® denotes a trademark and registered mark owned by James Hardie Technology Ltd.